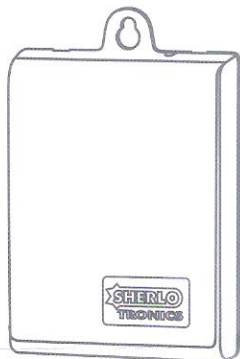


Model No: RX1-150

1 Channel Receiver : 150m Code Hopping

Technical Specifications:

| | |
|------------------------------|-----------------------------------|
| Model: | RX1-150 |
| Encryption type: | Code hopping |
| Transmission frequency: | 403MHz (Local) 433MHz(Export) |
| Transmission method: | OOK |
| Modulation | AM |
| Transmission range: | 150m "Line of sight" 60m"Indoors" |
| Memory capacity: | 80 remotes |
| Voltage range: | 10VDC to 16VDC |
| Standby current consumption: | +/-14mA 10% |
| Current consumption all on: | +/-50mA 10% |
| Operating Temperature: | -3°C to 49°C |
| Dimension (lxbxh) | 100 x 60 x 25mm |
| Gross weight: | 78g Packed |



Features:

Code-Hopping Encryption

1 x Relay output

Normally Open / Closed

ABS housing

Frequency stability controlled +/- 75KHz

Approvals:

This product is approved for use in residential, commercial and light industrial environment and complies with the essential protection requirements of the R&TTE Directive 1999/EC on the approximation of the laws of the Member states relating to electromagnetic compatibility and radio spectrum.

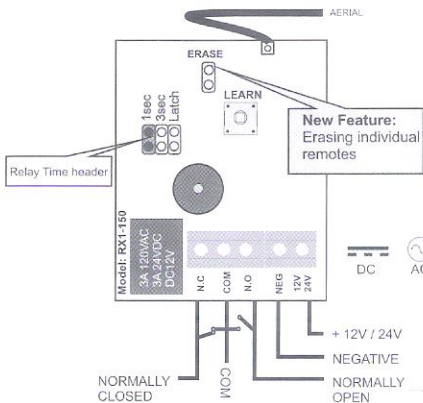
Certifications:

- ETSI EN300 220-V2.4.1
- ETSI EN301-489-3 V1.4.1
- ETSI EN301-489-1 V1.9.2
- IEC 60950-1:2005 + A1:2009



Order Codes:

1 Channel Receiver : 150m Code-hopping RX1-150



RX1 - 150

Defaulting the UNIT

Note: Please default the unit first before installation. This will erase any previously programmed factory test remotes from the memory.

Press and hold for more than 10 Seconds. When the beeping stops the unit is defaulted. Wait a few seconds until it re-boots.



Programming remotes in

1. Default the unit before you begin a new installation. This erases all previously programmed remotes.
2. Press the LEARN switch once to step to relay 1. (1 x beep sounds)
3. Press the button on the remote control a few times to learn in to the receiver. (2x beeps sound)
4. Continue to learn in any additional remote controls until all the remotes are programmed in.
5. Press the LEARN switch again to Exit out of learn mode. (1 x Long beep sounds)

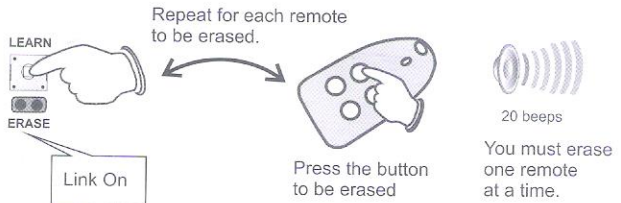
Note: The unit can be programmed with up to 80 remotes. When the memory limit has reached its limit the RX1-150 will auto exit out of program mode. The unit auto exits out of program mode if nothing is received after 10 -20 seconds.

Programming the ON/OFF function

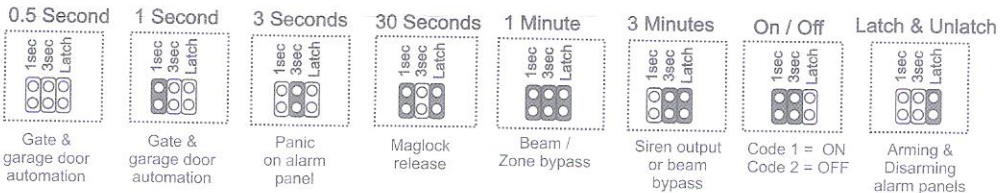
1. Default the unit before you begin a new installation. This erases all previously programmed remotes.
2. Select the 1 sec & 3 sec relay time jumpers respectively.
3. Press the LEARN switch once to step to relay 1 (ON command) (1 x beep sounds)
4. Press the button on the remote control for the ON command. (2 x short beeps sound)
5. Press the LEARN switch again to advance to the OFF command. (2 x beep sounds)
6. Press the button on the remote control for the OFF command. (2 x short beeps sound)
7. Press the LEARN switch again to exit out of learn mode (1 x long beep sounds)

Erasing individual remotes

1. Link the ERASE jumper
2. Press the LEARN switch
3. Press the remote to be erased
4. Repeat step 2 & 3 for each remote to be erased.
5. Remove ERASE jumper when done



Relay time jumper settings



Warranty

This product is sold subject to our standard warranty conditions and is warranted against defects in workmanship for a period of two years.

Customer Support line: +2711 462 5101 E-mail: technical@sherlotronics.co.za