

FOREND

FITTING TEMPLATE

76mm Backset

D034S Lever Sash Lock Holes A, B, C, E

D033D Lever Dead Lock Holes C, E

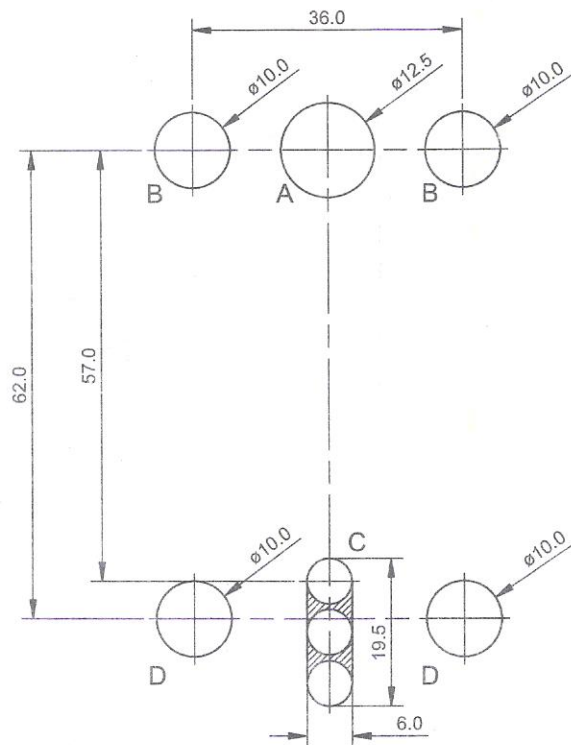
D031L Mortice Latch Holes A, B, E

Security Escutcheons Add holes D



CASE

DOOR EDGE

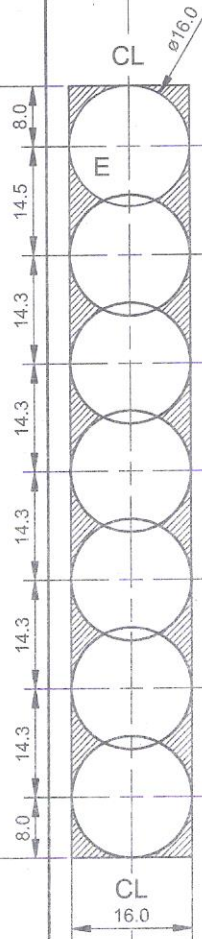


CASE

155.0

135.0

102.0



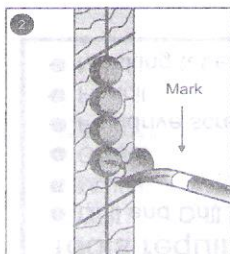
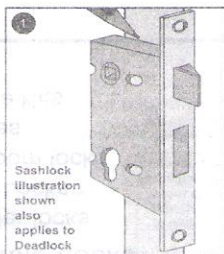
NOTE:

See checklist at top for holes to drill

FOREND

22.0

NB: Illustrations show sash locks but same fitting is used for deadlocks



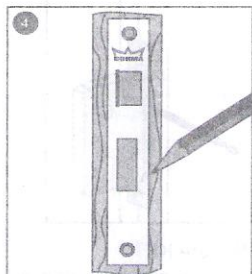
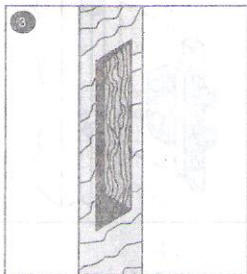
Preparation to the Door:

1. Position the lock body as near to the midheight of the door as possible making sure that the proposed mortised hole avoids cutting through the doorframe joints. Place the lock body against and across the door edge and mark the top and bottom of the lock case as illustrated. (If a steel frame line lock up with the striker in the steel frame.)

2. Along the doors edge mark a vertical line central to the door thickness which is used as a central guideline for a series of holes to be drilled to the required depth.

The required depth = lock body depth + Forend thickness.

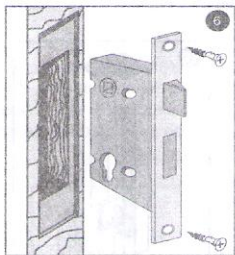
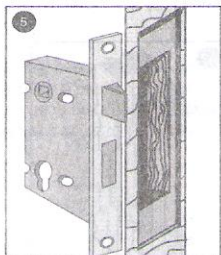
Helpful Hints - Mark the "drill-bit" using a piece of masking tape or a visible marker. The hole centres should be slightly less than the drill diameter in order that the drilled holes overlap.



3. Chisel out the remaining wood to provide satisfactory clearance for the lock body.

4. Insert the lock body into the prepared mortised hole, screw the faceplate into position and mark around the lock faceplate and chisel out a recess to accept the forend/faceplate. Ensuring that when fitted the faceplate is flush with the door edge.

IMPORTANT: With the lock fitted check that the angled or bevelled edge of the latch bolt is facing the door frame when closing. Should the latch bolt require reversing refer to "Reversing Latch Bolt".

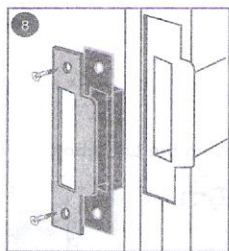
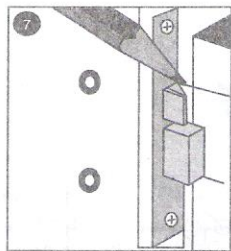


5. Place the lock body against the face of the door and in line with the lock recess making sure that allowance is made for the forend thickness, mark through and drill the hole positions for the Key or Cylinder (Deadlock) or Key or Cylinder and Spindle (Sash lock).

6. Fix the lock into the door with the screws provided ensuring that the key or cylinder and spindle pass through freely into the lock.

Fix handles and/or escutcheons as per their own fixing instructions.

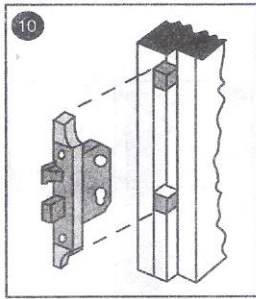
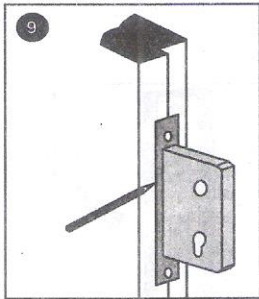
Test the final fitting ensuring the latch and/or Deadbolt operate freely.



Fixing the plastic box and Flat Striker

7. When the lock is fitted, with the door in the open position, turn the key to operate the dead bolt into the "locked position", gently close the door against the frame and mark on the doorframe the top edge of the latchbolt and the bottom edge of the deadbolt.

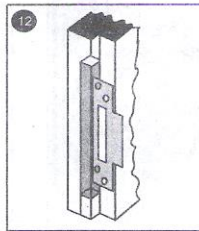
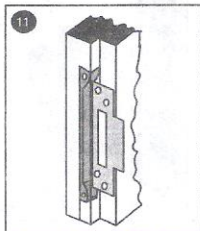
8. Transfer these two marks across to the inside face of the doorframe rebate, mark an additional horizontal line approximately 2mm above the top line. This line represents the top inside edge of the aperture within the striker. This line determines the outside striking edge of the "striker aperture" (See Diagram 8) and will provide operating clearance. To determine the horizontal position of the striker retract the dead bolt and close the door applying a little pressure, make a line on the inside rebate face against the flat face of the latch bolt. With the final position established mark around the dust box and drill a series of holes to the required depth removing excess wood with a chisel. Insert the dust box and place the striker over it, mark around the outside of the striker and chisel the recess, ensuring that depth is sufficient for the striker face to be flush with the inside rebate of the frame.



Fitting a Rebate Kit

9. Having selected the position of the lock in the door (see instruction 1), place the lock faceplate central over the door rebate and mark around the leading edge of the door and chisel out and down to the depth of the door rebate. Refer to the instructions 2, 3 and 5 overleaf regarding the mortising to the required depth into the door ensuring that the loose forend is flush with the leading (outside) edge of the door.

10. Insert the lock with the rebate adaptor (short), aligned around the fixed forend, mark around the rebate adaptor and chisel out the additional wood, to allow the rebate adaptor to sit flat against the bottom of the door rebate. Refit the lock, inserting the rebate adapter and loose face plates over and secure in position.



11. Determine the position of the striker on the opposing door as described under 7 and 8 overleaf and mortise/chisel out for the striker. Cut out the excess wood to allow for the rebate adaptor surround, to fit the striker.

12. The rebate kit is fully installed.