

Chubb

3G110 & 3G135 Mortice Deadlocks Fitting Instructions

Before commencing, please read thoroughly to familiarize yourself with these instructions and use of the template.
Unless otherwise stated all illustrations show door hung right, viewed from inside and opening inwards. The lock however is suitable for inward or outward opening doors, hinged left or right.
Lock Fitting.

1a. Mark height line lightly on the frame, door face and edge 146mm above the desired keyhole position also marking a centre line down the door edge. Carefully cut the template from the fitting instructions along the bold dotted line.

1b. Place the template on the door edge with the arrows aligned with the centre line and the top of the template level with the height line. The template can be taped temporarily in position to prevent movement. Mark the centers of the holes to be drilled for the lock body with a bradawl.

2a. Before drilling holes mark the required depth on the drill bit with adhesive tape. Drill holes for mortice lock with a 19mm bit. 3mm deeper than the lock to be fitted. Please take great care to keep the drill level and straight, we recommend the use of a brace and bit for drilling holes for lock and locking your mortice.

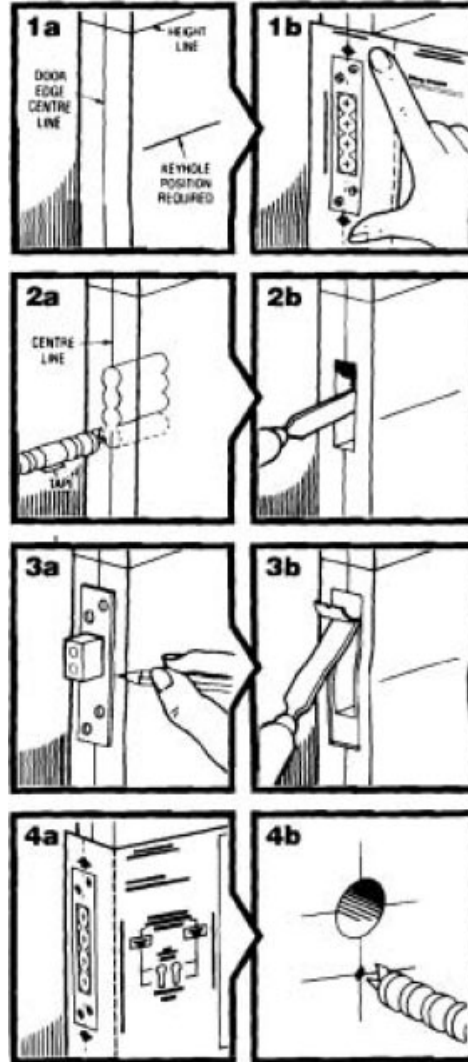
2b. Carefully remove the remaining wood from the mortice using a 19mm chisel so that the lock body fits snugly without excessive force.
NB On no account should the lock be hammered into place. When testing the lock. It's a good idea to do so with the bolt in a locked position. By holding the bolt the lock can more easily be removed from the mortice.

3a. Insert the lock into the prepared mortice then, ensuring it is parallel with the door edge, mark around the forend.

3b. Remove the lock and carefully chisel out a recess to enable the faceplate to lie flush with the door edge.

4a. Fold the template along the vertical dotted line and place around the door edge with the top level with the height line. Select the keyhole position to suit your lock (67mm or 80mm). Mark the hole centers of the keyhole with a bradawl.

4b. Drill out holes for keyhole using an 8mm and a 5mm drill bits shown on the template. Drill through the door until the point of the drill breaks through on the opposite side. Working from the opposite side complete drilling and open out to form keyhole shape. Using a small round and flat file form keyhole to allow easy entry of key. Please ensure the drill is vertical and straight and take care when the drill breaks through the wood on the opposite side to reduce splintering.



5a. With the deadbolt thrown, fit the lock into the prepared mortise complete with the faceplate and mark fixing holes with a bradawl. Secure with the 1¼" x 8 screws provided using a No. 2 Pozidrive screwdriver

5b. Place the key plate over the keyhole then Insert the key ensure the key is central in the keyplate then mark the screw holes with a bradawl. Remove the key and fix to the door with the ½ x 4 slotted head screws using a suitably sized screwdriver

NB It is recommended for privacy the key plate with the flap is fitted internally.

Test the lock from both sides with the key to ensure smooth operation of the bolt before proceeding

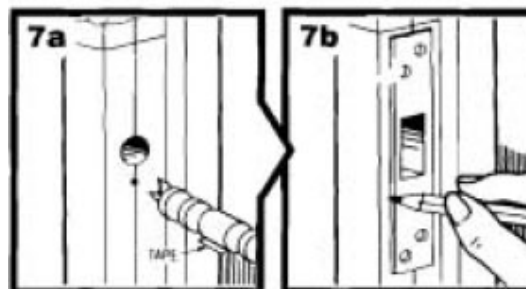
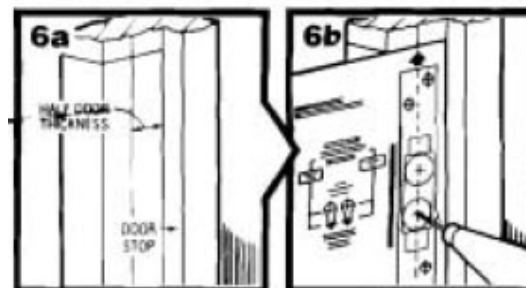
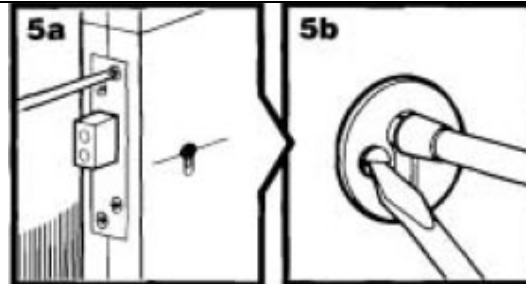
Locking Box Fitting.

6a. Measure the thickness of the door edge and mark a vertical line on the door frame equal to half this dimension. This measurement should be taken from the door stop

6b. Place the striker box template level with the height line marked previously and align the arrows with the vertical line. Mark the centers of the holes to be drilled for the striker box with a bradawl.

7a. Drill holes using a 22mm drill bit to a depth of 25mm. Again take care to keep the drill level and straight. Chisel out the wood for the locking box and box flanges to give a snug fit.

7b. Place locking box in position making sure it is parallel with door frame and mark around its edge. Clearance between faceplate and locking box should be adequate to ensure smooth operation recess into frame is required. Fit locking box and mark the position of the fixing screw holes with a bradawl and secure into place using a No. 2 Pozidrive screwdriver. Close the door and test the operation.



Comprehensive fitting instructions with template.

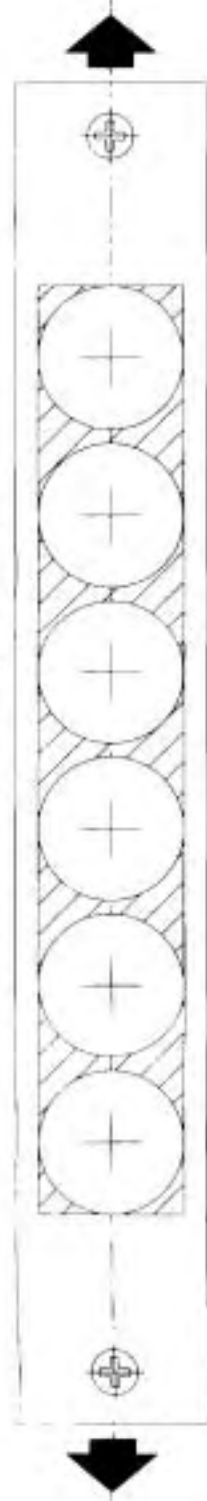
All fixing screws supplied

Tools required:

- Drill with 5mm, 8mm, 19mm and 22mm dia bits.
- Bradawl
- Chisel 19mm
- Mallet
- No. 2 pozidrive screwdriver
- Round file 5mm dia.
- Pencil
- Rule
- Scissors

Centre line of door.

Drill 6 holes 19mm (3/4") dia. for mortise lock.



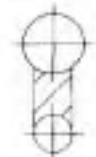
Carefully cut along line and place edge on height line.

Fitting Template for 3G110 & 3G135

Due to working tolerances in both printing and manufacture minimal variation may exist between template and product. Please check before proceeding.

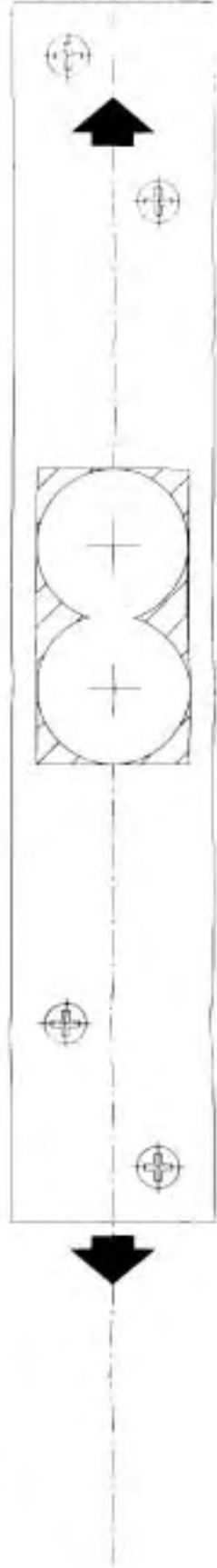
Fold dotted line along door edge to mark position of keyhole.

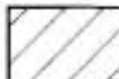
Drill 8mm (5/16") dia. hole.



Drill 5mm (3/16") dia. hole.

Drill 2 holes 22mm (7/8") dia. for locking box.



 Remove shaded area to form mortise to suit lock body, locking box, and keyhole.